



the **play inspection** company  
*the safest hands around playgrounds*

---

## Annual Inspection

TK Play

Frithelstock Parish Playing Fields

Hele Lane, Frithelstock, Devon



Unit 5 Glenmore Business Park, Blackhill Road, Poole, Dorset, BH16 6NL  
t - 01202 590675 f - 0870 428 3942 e - info@playinspections.co.uk

[www.playinspections.co.uk](http://www.playinspections.co.uk)

Powered by:

**the play ►  
inspection app**  
*by the play inspection company*

# Risk Assessment Matrix

Probability>>

5	Very High	VL	L	M	H	VH
4	High	VL	L	M	H	H
3	Moderate	VL	L	L	M	M
2	Low	VL	L	L	L	L
1	Very Low	VL	VL	VL	VL	VL
		Very Low	Low	Moderate	High	Very High
		1	2	3	4	5

Severity>>

Probability Score	Probability of Occurrence
1 – Very Low	No significant probability; lightning Strike
2 – Low	Minimal probability of occurrence. Requires significant factor or combination of factors to take place. Significant increase in intensity of use.
3 – Moderate	Moderate probability. An added factor is needed to cause an accident. Designed use is unlikely to be problematic, additional factor is required. Covers or guards loose, removed or vandalised. Absent guard rail or barrier at high levels
4 – High	High probability. Accident is probable without any added factor. Glass contaminant in loose fill surface. Exposed sharp edges on equipment.
5 – Very High	Very High probability. If the situation is not addressed an accident is almost certain. Severely worn chains/shackles. Severely damaged surfacing within impact area

Severity Score	Severity of injury
1 – Very Low	No injury likely e.g. damaged or soiled clothing, minor bruising
2 – Low	Minor injury – Laceration or bruising requiring first aid only
3 – Moderate	Injury requiring medical intervention e.g. laceration requiring stitches, sprain, fracture of small bones of hand or foot.
4 – High	Serious injury including hospitalisation for observation e.g. concussion, fracture of long bones of leg/arm, back/neck injuries, fractured skull.
5 – Very High	Severe injury involving the potential for permanent disability e.g. amputation, loss of sight, spinal injury, fatality.

NB: When we inspect we only see a snapshot of the current condition of the equipment. It is the operator's responsibility to ensure that there is a continuing level of maintenance to keep the equipment in good working order and the site fit for use.

BS EN 1176:2008 Parts 1-11 (Playground equipment and surfacing)  
BS EN 14974 (Facilities for users of roller sports equipment)  
BS EN 15312 (Free access multi-sports equipment)  
BS 10075 (Specification for Parkour Equipment)

## Site Information

Inspection Ref: 250702

Site Ref: 32945

Customer Order No: None

Annual Inspection - 13 May 2016 at 11:21 Inspector: Dr. Jody Chilton RPII Annual Inspector

Risk Assessment: **12 - Moderate Risk**



**Location:** The site is located in an area of public open space and is overlooked by a number of properties in the local community.

**Disabled Access:** Severely limited access – an area that presents serious barriers to disabled people, even when skilled help is at hand.



## 0 - Risk Assessment not Undertaken

**Item:** Ancillary Items - Gate  
**Manufacturer:** Unknown  
**Surface Type:** Grass  
**Equipment Compliance:** N/A  
**Surface Area Compliance:** N/A  
**Ref/Part Number:**  
**Total Findings:** 1



### Finding 1

The gate was locked at the time of the inspection and could not be assessed - N/A



## 6 - Low Risk

**Item:** Ancillary Items - Site General  
**Manufacturer:** Unknown  
**Surface Type:** N/A  
**Equipment Compliance:** N/A  
**Surface Area Compliance:** N/A  
**Ref/Part Number:**  
**Total Findings:** 1



### Finding 1

There is some strimmer damage apparent on the posts, this can penetrate the preservative applied to the timber and accelerate the rotting process - Monitor for any deterioration (rot) and replace as required



## 6 - Low Risk

**Item:** Ancillary Items - Litter Bin  
**Manufacturer:** Unknown  
**Surface Type:** N/A  
**Equipment Compliance:** N/A  
**Surface Area Compliance:** N/A  
**Ref/Part Number:**  
**Total Findings:** 2



### Finding 1

The paintwork on this item has been damaged or worn exposing the metal underneath which is rusting - Treat any rusting components and repaint

### Finding 2

There is a box of bottles present - Remove



## 6 - Low Risk

**Item:** Ancillary Items - Bench  
**Manufacturer:** Unknown  
**Surface Type:** N/A  
**Equipment Compliance:** N/A  
**Surface Area Compliance:** N/A  
**Ref/Part Number:**  
**Total Findings:** 2



### Finding 1

The timber stain is in poor condition - Prepare all affected parts and re-stain with an appropriate preservative

### Finding 2

There is some evidence of rot in the timber - Monitor for any further deterioration and replace as required





## 8 - Low Risk

**Item:** Ancillary Items - Picnic Table  
**Manufacturer:** Unknown  
**Surface Type:** Grass  
**Equipment Compliance:** N/A  
**Surface Area Compliance:** N/A  
**Ref/Part Number:**  
**Total Findings:** 2



### Finding 1

The bench is not securely fixed to the surface and there is some possibility of the item tipping or rolling over - Secure the bench to the ground

### Finding 2

There are projecting bolt thread(s) present - Remove excess thread length and deburr or provide cap



## 6 - Low Risk

**Item:** Ancillary Items - Sign  
**Manufacturer:** Owner/Operator  
**Surface Type:** N/A  
**Equipment Compliance:** N/A  
**Surface Area Compliance:** N/A  
**Ref/Part Number:**  
**Total Findings:** 1



### Finding 1

The sign has sharp projecting corners - Remove sharp corners/edges as required



## 8 - Low Risk

**Item:** Ancillary Items - Teenage Shelter  
**Manufacturer:** Lappset UK Ltd  
**Surface Type:** Grass  
**Equipment Compliance:** N/A  
**Surface Area Compliance:** N/A  
**Ref/Part Number:**  
**Total Findings:** 2



### Finding 1

There is some damage to the floor creating a trip point - Repair as required to remove trip point

### Finding 2

There are projecting bolt thread(s) present - Remove excess thread length and deburr or provide cap



## 8 - Low Risk

**Item:** Rotor Play - Roundabout  
**Manufacturer:** Wicksteed Playgrounds  
**Surface Type:** Matta  
**Equipment Compliance:** No  
**Surface Area Compliance:** Yes  
**Ref/Part Number:**  
**Total Findings:** 3



### Finding 1

The grass mats are silted up and the soil is compacted; this may have an effect on the impact absorbing properties of the surface - Lift and relay mats or test impact absorbing properties to ensure the correct surface qualities are maintained for the equipment

### Finding 2

The distance between the underside of the roundabout platform and the playing surface is in excess of 110mm and contravenes the requirements of BS EN 1176 Part 5 which requires that the distance be maintained between 60mm-110mm - for the entire circumference of the roundabout - Monitor use

### Finding 3

The bearing is worn and has excessive lateral play - Replace the bearing as required



## 6 - Low Risk

**Item:** Swings - 1 Bay 2 Seat (Cradle)  
**Manufacturer:** Lappset UK Ltd  
**Surface Type:** Grass  
**Equipment Compliance:** No  
**Surface Area Compliance:** Yes  
**Ref/Part Number:**  
**Total Findings:** 4



### Finding 1

There is/are bolt cap covers missing or damaged on the item - Replace missing or damaged bolt cap covers

### Finding 2

There is minor damage to a support post around the foot mount - Monitor for any further deterioration and repair as required

### Finding 3

The chain openings are in excess of the 8.6mm as recommended by BS EN 1176 - Monitor use and replace with compliant chains during next maintenance cycle.

### Finding 4

There is some chain wear - Monitor for any further deterioration and replace when 40% worn





## 6 - Low Risk

**Item:** Rocking Equipment - Spring Dog  
**Manufacturer:** Lappset UK Ltd  
**Surface Type:** Grass  
**Equipment Compliance:** No  
**Surface Area Compliance:** Yes  
**Ref/Part Number:**  
**Total Findings:** 4



### Finding 1

The end of handgrips and/or footrests have a cross section of less than 15cm<sup>2</sup> and fail to meet the requirements of BS EN 1176:2008 Part 6 - This is a relatively low risk failure and no remedial action is recommended

### Finding 2

The plywood has delaminated in some places - Remove all rough or splintered edges.

### Finding 3

There is minor damage to the seat - Monitor for any further deterioration and repair as required

### Finding 4

The timber stain is in poor condition - Prepare all affected parts and re-stain with an appropriate preservative



## 8 - Low Risk

**Item:** Rocking Equipment - Spring Bike  
**Manufacturer:** Lappset UK Ltd  
**Surface Type:** Grass  
**Equipment Compliance:** No  
**Surface Area Compliance:** Yes  
**Ref/Part Number:**  
**Total Findings:** 4



### Finding 1

The end of handgrips and/or footrests have a cross section of less than 15cm<sup>2</sup> and fail to meet the requirements of BS EN 1176:2008 Part 6 - This is a relatively low risk failure and no remedial action is recommended

### Finding 2

The seat is missing - Replace the seat

### Finding 3

There is some evidence of rot in the timber - Monitor for any further deterioration and replace as required

### Finding 4

The timber stain is in poor condition - Prepare all affected parts and re-stain with an appropriate preservative



## 10 - Low Risk

**Item:** Activity Equipment - Multi Play (Junior)  
**Manufacturer:** Lappset UK Ltd  
**Surface Type:** Grass  
**Equipment Compliance:** No  
**Surface Area Compliance:** Yes  
**Ref/Part Number:**  
**Total Findings:** 7



### Finding 1

The item fails to meet the requirements of BS EN 1176:2008 Part 1 4.2.7.2 for head and neck entrapment in the curved access net - Monitor use

### Finding 2

A number of rope fixing(s) have worked loose - Secure all loose fixings

### Finding 3

There is/are bolt cap covers missing or damaged on the item - Replace missing or damaged bolt cap covers

### Finding 4

A number of handrail fixing(s) have worked loose throughout the unit - Secure all loose fixings

### Finding 5

There is/are finger entrapment/s in the platform at the top of the slide and the item fails to meet the requirements of BS EN 1176:2008 Part 1 4.2.7.6 Entrapment of fingers - Monitor use

### Finding 6

The paintwork on this item has been damaged or worn exposing the metal underneath which is rusting - Treat any rusting components and repaint

### Finding 7

The item of equipment has a fall height exceeding 1.50 metres and grassmats are buried potentially affecting their impact attenuating properties.  
- Lift and relay the mats or provide a new suitable impact attenuating surface



## 10 - Low Risk

**Item:** Swings - 1 Bay 2 Seat (Flat)  
**Manufacturer:** Lappset UK Ltd  
**Surface Type:** Grass  
**Equipment Compliance:** No  
**Surface Area Compliance:** Yes  
**Ref/Part Number:**  
**Total Findings:** 7



### Finding 1

There is/are bolt cap covers missing or damaged on the item - Replace missing or damaged bolt cap covers

### Finding 2

There is minor damage to a post - Monitor for any further deterioration and replace as required

### Finding 3

The seats are over 650mm high and may be difficult for some users to access - Consider lengthening the chains to lower the seats

### Finding 4

The chain openings are in excess of the 8.6mm as recommended by BS EN 1176 - Monitor use and replace with compliant chains during next maintenance cycle.

### Finding 5

There is some chain wear - Monitor for any further deterioration and replace when 40% worn

### Finding 6

The seat has minor damage or wear - Monitor for any further deterioration and replace as required

### Finding 7

The item of equipment has a fall height exceeding 1.50 metres and the grassmats have been buried potentially affecting their impact attenuating properties.  
- Lift and relay the mats or provide a new suitable impact attenuating surface





## 10 - Low Risk

**Item:** Activity Equipment - Somersault Bars  
**Manufacturer:** Lappset UK Ltd  
**Surface Type:** Grass  
**Equipment Compliance:** Yes  
**Surface Area Compliance:** No  
**Ref/Part Number:**  
**Total Findings:** 1



### Finding 1

The item of equipment has a fall height exceeding 1.50 metres and grass has been provided as a safety surface - Provide a suitable impact attenuating surface



## 12 - Moderate Risk

**Item:** Activity Equipment - Adventure Trail  
**Manufacturer:** Lappset UK Ltd  
**Surface Type:** Grass  
**Equipment Compliance:** No  
**Surface Area Compliance:** Yes  
**Ref/Part Number:**  
**Total Findings:** 5



### Finding 1

There are falls in excess of 600mm between adjacent components on the structure - Monitor use

### Finding 2

There are areas or parts of the timber stilt platforms on the structure that have rotted around fixing points - Replace all affected timbers

### Finding 3

Parts of the timber are rough or splintered - Remove all rough or sharp edges

### Finding 4

There is/are several inserts missing - Replace missing inserts

### Finding 5

A number of fixing(s) have worked loose - Secure all loose fixings



## 8 - Low Risk

**Item:** Activity Equipment - Activity Trail  
**Manufacturer:** Lappset UK Ltd  
**Surface Type:** Grass  
**Equipment Compliance:** No  
**Surface Area Compliance:** Yes  
**Ref/Part Number:**  
**Total Findings:** 6



### Finding 1

There are falls in excess of 600mm between adjacent components on the structure - Monitor use

### Finding 2

A number of handle fixing(s) have worked loose - Secure all loose fixings

### Finding 3

There is/are several inserts missing - Replace missing inserts

### Finding 4

The paintwork on this item has been damaged or worn exposing the metal underneath which is rusting - Treat any rusting components and repaint

### Finding 5

There is/are bolt cap covers missing or damaged on the item - Replace missing or damaged bolt cap covers

### Finding 6

A number of footplate fixing(s) have worked loose - Secure all loose fixings



## 10 - Low Risk

**Item:** Multi Use Games Area - Football Goal  
**Manufacturer:** Unknown  
**Surface Type:** Grass  
**Equipment Compliance:** N/A  
**Surface Area Compliance:** N/A  
**Ref/Part Number:**  
**Total Findings:** 4



### Finding 1

The goals are slightly loose in their sockets - Monitor for any further deterioration and repair as required

### Finding 2

The paintwork on this item has been damaged or worn exposing the metal underneath which is rusting - Treat any rusting components and repaint

### Finding 3

The 5 a side goals and nets are not secured to the ground and there is some possibility of the item tipping over - Secure the goals

### Finding 4

A number of fixing(s) have worked loose - Secure all loose fixings



## Findings Information



### 0 - Risk Assessment not Undertaken (Finding 1)

**Item:** Ancillary Items - Gate  
**Manufacturer:** Unknown

**Risk Level:** N - Risk Assessment not Undertaken  
**Surface:** Grass



**Finding:** The gate was locked at the time of the inspection and could not be assessed

**Action:** N/A



### 6 - Low Risk (Finding 1)

**Item:** Ancillary Items - Site General  
**Manufacturer:** Unknown

**Risk Level:** L - Low Risk  
**Surface:** N/A



**Finding:** There is some strimmer damage apparent on the posts, this can penetrate the preservative applied to the timber and accelerate the rotting process

**Action:** Monitor for any deterioration (rot) and replace as required



## 6 - Low Risk (Finding 1)

**Item:** Ancillary Items - Litter Bin  
**Manufacturer:** Unknown

**Risk Level:** L - Low Risk  
**Surface:** N/A



**Finding:** The paintwork on this item has been damaged or worn exposing the metal underneath which is rusting

**Action:** Treat any rusting components and repaint



## 6 - Low Risk (Finding 2)

**Item:** Ancillary Items - Litter Bin  
**Manufacturer:** Unknown

**Risk Level:** L - Low Risk  
**Surface:** N/A



**Finding:** There is a box of bottles present

**Action:** Remove





## 6 - Low Risk (Finding 1)

**Item:** Ancillary Items - Bench  
**Manufacturer:** Unknown

**Risk Level:** L - Low Risk  
**Surface:** N/A



**Finding:** The timber stain is in poor condition

**Action:** Prepare all affected parts and re-stain with an appropriate preservative



## 6 - Low Risk (Finding 2)

**Item:** Ancillary Items - Bench  
**Manufacturer:** Unknown

**Risk Level:** L - Low Risk  
**Surface:** N/A



**Finding:** There is some evidence of rot in the timber

**Action:** Monitor for any further deterioration and replace as required



## 8 - Low Risk (Finding 1)

**Item:** Ancillary Items - Picnic Table  
**Manufacturer:** Unknown

**Risk Level:** L - Low Risk  
**Surface:** Grass



**Finding:** The bench is not securely fixed to the surface and there is some possibility of the item tipping or rolling over

**Action:** Secure the bench to the ground



## 6 - Low Risk (Finding 2)

**Item:** Ancillary Items - Picnic Table  
**Manufacturer:** Unknown

**Risk Level:** L - Low Risk  
**Surface:** Grass



**Finding:** There are projecting bolt thread(s) present

**Action:** Remove excess thread length and deburr or provide cap



## 6 - Low Risk (Finding 1)

**Risk Level:** L - Low Risk  
**Surface:** N/A



**Action:** Remove sharp corners/edges as required

## 8 - Low Risk (Finding 1)

**Risk Level:** L - Low Risk  
**Surface:** Grass



**Action:** Repair as required to remove trip point



## 6 - Low Risk (Finding 2)

**Item:** Ancillary Items - Teenage Shelter  
**Manufacturer:** Lappset UK Ltd

**Risk Level:** L - Low Risk  
**Surface:** Grass



**Finding:** There are projecting bolt thread(s) present

**Action:** Remove excess thread length and deburr or provide cap



## 8 - Low Risk (Finding 1)

**Item:** Rotor Play - Roundabout  
**Manufacturer:** Wicksteed Playgrounds

**Risk Level:** L - Low Risk  
**Surface:** Matta



**Finding:** The grass mats are silted up and the soil is compacted; this may have an effect on the impact absorbing properties of the surface

**Action:** Lift and relay mats or test impact absorbing properties to ensure the correct surface qualities are maintained for the equipment





## 6 - Low Risk (Finding 2)

**Item:** Rotor Play - Roundabout  
**Manufacturer:** Wicksteed Playgrounds

**Risk Level:** L - Low Risk  
**Surface:** Matta



**Finding:** The distance between the underside of the roundabout platform and the playing surface is in excess of 110mm and contravenes the requirements of BS EN 1176 Part 5 which requires that the distance be maintained between 60mm-110mm - for the entire circumference of the roundabout

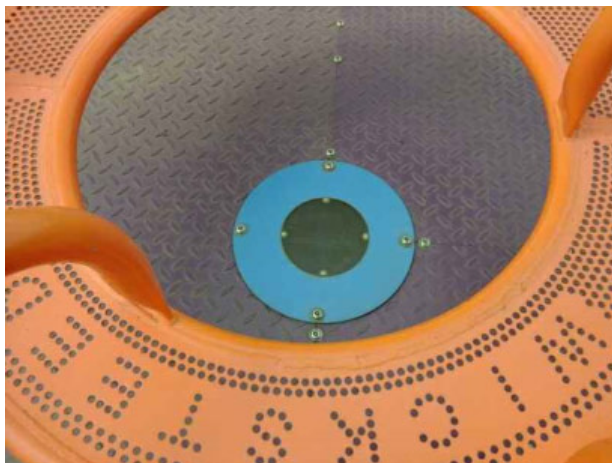
**Action:** Monitor use



## 6 - Low Risk (Finding 3)

**Item:** Rotor Play - Roundabout  
**Manufacturer:** Wicksteed Playgrounds

**Risk Level:** L - Low Risk  
**Surface:** Matta



**Finding:** The bearing is worn and has excessive lateral play

**Action:** Replace the bearing as required



## 6 - Low Risk (Finding 1)

**Item:** Swings - 1 Bay 2 Seat (Cradle)  
**Manufacturer:** Lappset UK Ltd

**Risk Level:** L - Low Risk  
**Surface:** Grass



**Finding:** There is/are bolt cap covers missing or damaged on the item

**Action:** Replace missing or damaged bolt cap covers



## 6 - Low Risk (Finding 2)

**Item:** Swings - 1 Bay 2 Seat (Cradle)  
**Manufacturer:** Lappset UK Ltd

**Risk Level:** L - Low Risk  
**Surface:** Grass



**Finding:** There is minor damage to a support post around the foot mount

**Action:** Monitor for any further deterioration and repair as required





#### 4 - Very Low Risk (Finding 3)

**Item:** Swings - 1 Bay 2 Seat (Cradle)  
**Manufacturer:** Lappset UK Ltd

**Risk Level:** V - Very Low Risk  
**Surface:** Grass



**Finding:** The chain openings are in excess of the 8.6mm as recommended by BS EN 1176

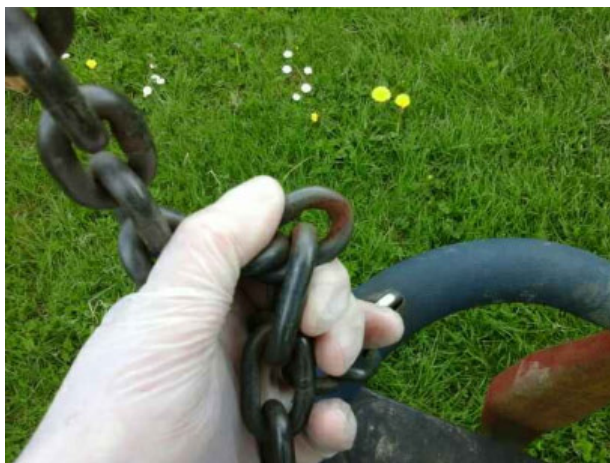
**Action:** Monitor use and replace with compliant chains during next maintenance cycle.



#### 6 - Low Risk (Finding 4)

**Item:** Swings - 1 Bay 2 Seat (Cradle)  
**Manufacturer:** Lappset UK Ltd

**Risk Level:** L - Low Risk  
**Surface:** Grass



**Finding:** There is some chain wear

**Action:** Monitor for any further deterioration and replace when 40% worn



#### 4 - Very Low Risk (Finding 1)

**Item:** Rocking Equipment - Spring Dog  
**Manufacturer:** Lappset UK Ltd

**Risk Level:** V - Very Low Risk  
**Surface:** Grass



**Finding:** The end of handgrips and/or footrests have a cross section of less than 15cm<sup>2</sup> and fail to meet the requirements of BS EN 1176:2008 Part 6

**Action:** This is a relatively low risk failure and no remedial action is recommended



#### 6 - Low Risk (Finding 2)

**Item:** Rocking Equipment - Spring Dog  
**Manufacturer:** Lappset UK Ltd

**Risk Level:** L - Low Risk  
**Surface:** Grass



**Finding:** The plywood has delaminated in some places

**Action:** Remove all rough or splintered edges.

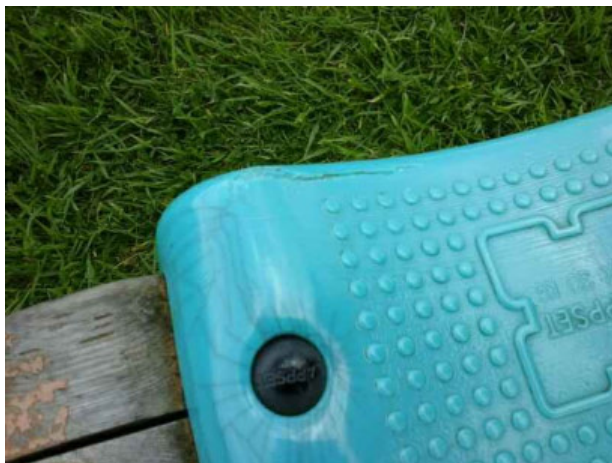




### 6 - Low Risk (Finding 3)

**Item:** Rocking Equipment - Spring Dog  
**Manufacturer:** Lappset UK Ltd

**Risk Level:** L - Low Risk  
**Surface:** Grass



**Finding:** There is minor damage to the seat

**Action:** Monitor for any further deterioration and repair as required



### 6 - Low Risk (Finding 4)

**Item:** Rocking Equipment - Spring Dog  
**Manufacturer:** Lappset UK Ltd

**Risk Level:** L - Low Risk  
**Surface:** Grass



**Finding:** The timber stain is in poor condition

**Action:** Prepare all affected parts and re-stain with an appropriate preservative



#### 4 - Very Low Risk (Finding 1)

**Item:** Rocking Equipment - Spring Bike  
**Manufacturer:** Lappset UK Ltd

**Risk Level:** V - Very Low Risk  
**Surface:** Grass



**Finding:** The end of handgrips and/or footrests have a cross section of less than 15cm<sup>2</sup> and fail to meet the requirements of BS EN 1176:2008 Part 6

**Action:** This is a relatively low risk failure and no remedial action is recommended



#### 8 - Low Risk (Finding 2)

**Item:** Rocking Equipment - Spring Bike  
**Manufacturer:** Lappset UK Ltd

**Risk Level:** L - Low Risk  
**Surface:** Grass



**Finding:** The seat is missing

**Action:** Replace the seat

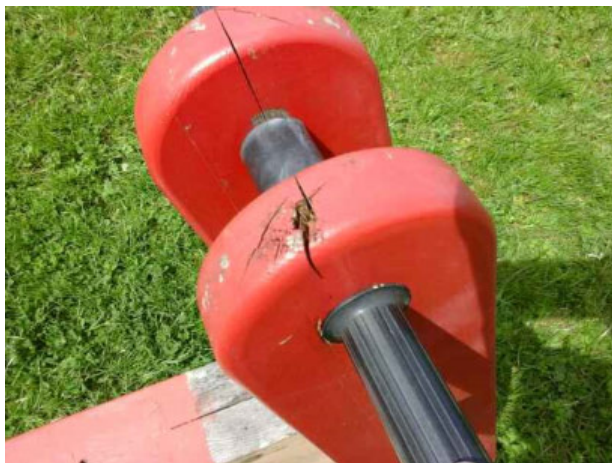




### 6 - Low Risk (Finding 3)

**Item:** Rocking Equipment - Spring Bike  
**Manufacturer:** Lappset UK Ltd

**Risk Level:** L - Low Risk  
**Surface:** Grass



**Finding:** There is some evidence of rot in the timber

**Action:** Monitor for any further deterioration and replace as required



### 6 - Low Risk (Finding 4)

**Item:** Rocking Equipment - Spring Bike  
**Manufacturer:** Lappset UK Ltd

**Risk Level:** L - Low Risk  
**Surface:** Grass



**Finding:** The timber stain is in poor condition

**Action:** Prepare all affected parts and re-stain with an appropriate preservative





### 5 - Very Low Risk (Finding 1)

**Item:** Activity Equipment - Multi Play (Junior)  
**Manufacturer:** Lappset UK Ltd

**Risk Level:** V - Very Low Risk  
**Surface:** Grass



**Finding:** The item fails to meet the requirements of BS EN 1176:2008 Part 1 4.2.7.2 for head and neck entrapment in the curved access net

**Action:** Monitor use



### 6 - Low Risk (Finding 2)

**Item:** Activity Equipment - Multi Play (Junior)  
**Manufacturer:** Lappset UK Ltd

**Risk Level:** L - Low Risk  
**Surface:** Grass



**Finding:** A number of rope fixing(s) have worked loose

**Action:** Secure all loose fixings



## 6 - Low Risk (Finding 3)

**Item:** Activity Equipment - Multi Play (Junior)  
**Manufacturer:** Lappset UK Ltd

**Risk Level:** L - Low Risk  
**Surface:** Grass



**Finding:** There is/are bolt cap covers missing or damaged on the item

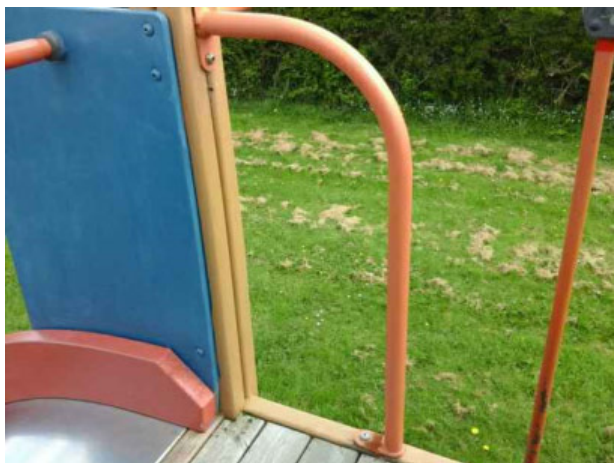
**Action:** Replace missing or damaged bolt cap covers



## 6 - Low Risk (Finding 4)

**Item:** Activity Equipment - Multi Play (Junior)  
**Manufacturer:** Lappset UK Ltd

**Risk Level:** L - Low Risk  
**Surface:** Grass



**Finding:** A number of handrail fixing(s) have worked loose throughout the unit

**Action:** Secure all loose fixings

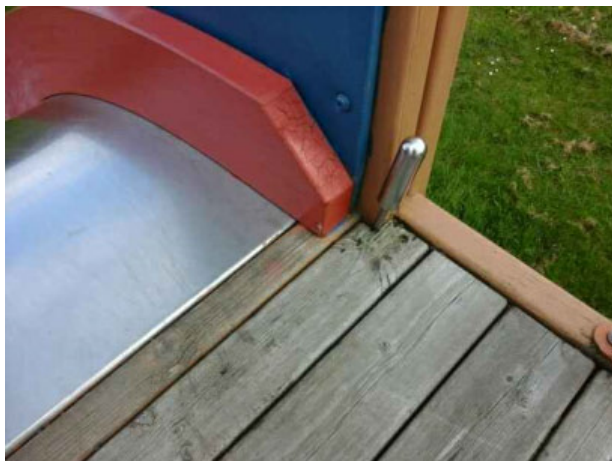




### 5 - Very Low Risk (Finding 5)

**Item:** Activity Equipment - Multi Play (Junior)  
**Manufacturer:** Lappset UK Ltd

**Risk Level:** V - Very Low Risk  
**Surface:** Grass



**Finding:** There is/are finger entrapment/s in the platform at the top of the slide and the item fails to meet the requirements of BS EN 1176:2008 Part 1 4.2.7.6 Entrapment of fingers

**Action:** Monitor use



### 6 - Low Risk (Finding 6)

**Item:** Activity Equipment - Multi Play (Junior)  
**Manufacturer:** Lappset UK Ltd

**Risk Level:** L - Low Risk  
**Surface:** Grass



**Finding:** The paintwork on this item has been damaged or worn exposing the metal underneath which is rusting

**Action:** Treat any rusting components and repaint



## 10 - Low Risk (Finding 7)

**Item:** Activity Equipment - Multi Play (Junior)  
**Manufacturer:** Lappset UK Ltd

**Risk Level:** L - Low Risk  
**Surface:** Grass



**Finding:** The item of equipment has a fall height exceeding 1.50 metres and grassmats are buried potentially affecting their impact attenuating properties.

**Action:** Lift and relay the mats or provide a new suitable impact attenuating surface



## 6 - Low Risk (Finding 1)

**Item:** Swings - 1 Bay 2 Seat (Flat)  
**Manufacturer:** Lappset UK Ltd

**Risk Level:** L - Low Risk  
**Surface:** Grass



**Finding:** There is/are bolt cap covers missing or damaged on the item

**Action:** Replace missing or damaged bolt cap covers





## 6 - Low Risk (Finding 2)

**Item:** Swings - 1 Bay 2 Seat (Flat)  
**Manufacturer:** Lappset UK Ltd

**Risk Level:** L - Low Risk  
**Surface:** Grass



**Finding:** There is minor damage to a post

**Action:** Monitor for any further deterioration and replace as required



## 6 - Low Risk (Finding 3)

**Item:** Swings - 1 Bay 2 Seat (Flat)  
**Manufacturer:** Lappset UK Ltd

**Risk Level:** L - Low Risk  
**Surface:** Grass



**Finding:** The seats are over 650mm high and may be difficult for some users to access

**Action:** Consider lengthening the chains to lower the seats

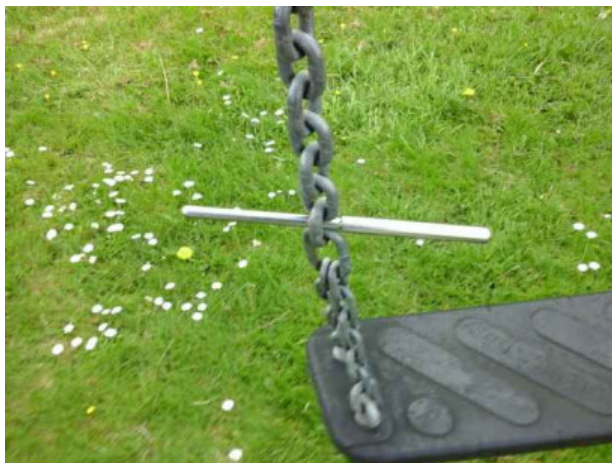




#### 4 - Very Low Risk (Finding 4)

**Item:** Swings - 1 Bay 2 Seat (Flat)  
**Manufacturer:** Lappset UK Ltd

**Risk Level:** V - Very Low Risk  
**Surface:** Grass



**Finding:** The chain openings are in excess of the 8.6mm as recommended by BS EN 1176

**Action:** Monitor use and replace with compliant chains during next maintenance cycle.



#### 6 - Low Risk (Finding 5)

**Item:** Swings - 1 Bay 2 Seat (Flat)  
**Manufacturer:** Lappset UK Ltd

**Risk Level:** L - Low Risk  
**Surface:** Grass



**Finding:** There is some chain wear

**Action:** Monitor for any further deterioration and replace when 40% worn



## 6 - Low Risk (Finding 6)

**Item:** Swings - 1 Bay 2 Seat (Flat)  
**Manufacturer:** Lappset UK Ltd

**Risk Level:** L - Low Risk  
**Surface:** Grass



**Finding:** The seat has minor damage or wear

**Action:** Monitor for any further deterioration and replace as required



## 10 - Low Risk (Finding 7)

**Item:** Swings - 1 Bay 2 Seat (Flat)  
**Manufacturer:** Lappset UK Ltd

**Risk Level:** L - Low Risk  
**Surface:** Grass



**Finding:** The item of equipment has a fall height exceeding 1.50 metres and the grassmats have been buried potentially affecting their impact attenuating properties.

**Action:** Lift and relay the mats or provide a new suitable impact attenuating surface





## 10 - Low Risk (Finding 1)

**Item:** Activity Equipment - Somersault Bars  
**Manufacturer:** Lappset UK Ltd

**Risk Level:** L - Low Risk  
**Surface:** Grass



**Finding:** The item of equipment has a fall height exceeding 1.50 metres and grass has been provided as a safety surface

**Action:** Provide a suitable impact attenuating surface



## 8 - Low Risk (Finding 1)

**Item:** Activity Equipment - Adventure Trail  
**Manufacturer:** Lappset UK Ltd

**Risk Level:** L - Low Risk  
**Surface:** Grass



**Finding:** There are falls in excess of 600mm between adjacent components on the structure

**Action:** Monitor use



12 - Moderate Risk (Finding 2)

**Item:** Activity Equipment - Adventure Trail  
**Manufacturer:** Lappset UK Ltd

**Risk Level:** M - Moderate Risk  
**Surface:** Grass



**Finding:** There are areas or parts of the timber stilt platforms on the structure that have rotted around fixing points

**Action:** Replace all affected timbers





### 6 - Low Risk (Finding 3)

**Item:** Activity Equipment - Adventure Trail  
**Manufacturer:** Lappset UK Ltd

**Risk Level:** L - Low Risk  
**Surface:** Grass



**Finding:** Parts of the timber are rough or splintered

**Action:** Remove all rough or sharp edges



### 6 - Low Risk (Finding 4)

**Item:** Activity Equipment - Adventure Trail  
**Manufacturer:** Lappset UK Ltd

**Risk Level:** L - Low Risk  
**Surface:** Grass



**Finding:** There is/are several inserts missing

**Action:** Replace missing inserts



## 6 - Low Risk (Finding 5)

**Item:** Activity Equipment - Adventure Trail  
**Manufacturer:** Lappset UK Ltd

**Risk Level:** L - Low Risk  
**Surface:** Grass



**Finding:** A number of fixing(s) have worked loose

**Action:** Secure all loose fixings



## 8 - Low Risk (Finding 1)

**Item:** Activity Equipment - Activity Trail  
**Manufacturer:** Lappset UK Ltd

**Risk Level:** L - Low Risk  
**Surface:** Grass



**Finding:** There are falls in excess of 600mm between adjacent components on the structure

**Action:** Monitor use





## 6 - Low Risk (Finding 2)

**Item:** Activity Equipment - Activity Trail  
**Manufacturer:** Lappset UK Ltd

**Risk Level:** L - Low Risk  
**Surface:** Grass



**Finding:** A number of handle fixing(s) have worked loose

**Action:** Secure all loose fixings



## 6 - Low Risk (Finding 3)

**Item:** Activity Equipment - Activity Trail  
**Manufacturer:** Lappset UK Ltd

**Risk Level:** L - Low Risk  
**Surface:** Grass



**Finding:** There is/are several inserts missing

**Action:** Replace missing inserts





#### 6 - Low Risk (Finding 4)

**Item:** Activity Equipment - Activity Trail  
**Manufacturer:** Lappset UK Ltd

**Risk Level:** L - Low Risk  
**Surface:** Grass



**Finding:** The paintwork on this item has been damaged or worn exposing the metal underneath which is rusting

**Action:** Treat any rusting components and repaint



#### 6 - Low Risk (Finding 5)

**Item:** Activity Equipment - Activity Trail  
**Manufacturer:** Lappset UK Ltd

**Risk Level:** L - Low Risk  
**Surface:** Grass



**Finding:** There is/are bolt cap covers missing or damaged on the item

**Action:** Replace missing or damaged bolt cap covers



## 6 - Low Risk (Finding 6)

**Item:** Activity Equipment - Activity Trail  
**Manufacturer:** Lappset UK Ltd

**Risk Level:** L - Low Risk  
**Surface:** Grass



**Finding:** A number of footplate fixing(s) have worked loose

**Action:** Secure all loose fixings



## 6 - Low Risk (Finding 1)

**Item:** Multi Use Games Area - Football Goal  
**Manufacturer:** Unknown

**Risk Level:** L - Low Risk  
**Surface:** Grass



**Finding:** The goals are slightly loose in their sockets

**Action:** Monitor for any further deterioration and repair as required





## 6 - Low Risk (Finding 2)

**Item:** Multi Use Games Area - Football Goal  
**Manufacturer:** Unknown

**Risk Level:** L - Low Risk  
**Surface:** Grass



**Finding:** The paintwork on this item has been damaged or worn exposing the metal underneath which is rusting

**Action:** Treat any rusting components and repaint



## 10 - Low Risk (Finding 3)

**Item:** Multi Use Games Area - Football Goal  
**Manufacturer:** Unknown

**Risk Level:** L - Low Risk  
**Surface:** Grass



**Finding:** The 5 a side goals and nets are not secured to the ground and there is some possibility of the item tipping over

**Action:** Secure the goals





## 6 - Low Risk (Finding 4)

**Item:** Multi Use Games Area - Football Goal  
**Risk Level:** L - Low Risk  
**Manufacturer:** Unknown  
**Surface:** Grass



**Finding:** A number of fixing(s) have worked loose  
**Action:** Secure all loose fixings